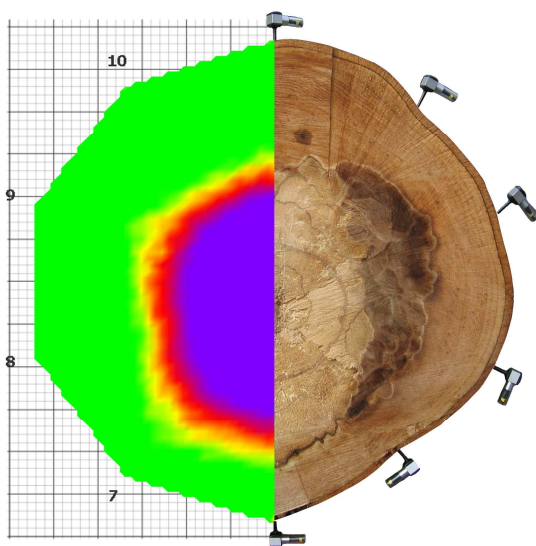


FAKOPP 3D

Acoustic Tomograph



User's Manual

Fakopp 3D Acoustic Tomograph - User's Manual -

1. Introduction	3
1.1 Fundamentals of acoustic testing	3
2. Hardware overview	5
2.1 Guarantee	5
2.2 Technical data	6
2.3 Piezo transducers	6
2.4 Amplifier boxes	7
2.5 Battery box	8
2.6 Sensor remover	9
3. Fakopp 3D Software	10
3.1 Requirements	10
3.2 Installation	10
3.3 Introduction	10
3.4 Menu system	12
3.5 Tabs	13
3.5.1 Notes	13
3.5.2 Time Data	14
3.5.3 Time matrix	15
3.5.4 Position data	16
3.5.5 Distance matrix	19
3.5.6 Velocity matrix	19
3.5.7 Velocity map	20
4. Fakopp Multilayer Viewer	23
4.1 Requirements	23
4.2 Installation	23
4.3 Usage	23
5. Using Fakopp 3D	27
5.1 Setting up the hardware	27
5.2 Setting up the Bluetooth connection	30
5.3 Collecting time data	38
5.4 Interpreting the results	39
5.5 Taking apart	40
6. Contacts	41

1. Introduction

Fakopp 3D is designed to evaluate trees, logs and lumber. The equipment is able to detect holes, decay and cracks in trees by a nondestructive technique. Fakopp 3D measures the transit time of the stress wave between transducers. The equipment helps the forester to determine the optimal time for wood felling. Other important applications are the determination of residual strength of old timbers and the evaluation of the stiffness of logs. The name Fakopp is a combination of two Hungarian words: 'fa' and 'kopp', meaning 'tree' and 'knocking'.

1.1 Fundamentals of acoustic testing

Testing by tapping is an ancient technique. The woodpecker taps trees and in this way it is able to find insects under the bark. Physicians also examine by tapping the human body. The tapping technique is able to examine living trees as well.

The woody material of a healthy tree is a good sound guide while decayed wood is a sound absorber. The velocity of sound in healthy wood is much higher than in voids or in decaying wood. This is the reason why the sound avoids defects in the tree.

As stated above, Fakopp 3D measures the time of sound traveling from one sensor to another. If there is a hole between the two sensors, the sound can not pass through the hole and has to travel a longer distance which means a higher traveltime.

Fakopp 3D uses several sensors and measures the traveltimes between each sensor pair. In this way internal holes can be mapped.



Figure 1 Sound path in healthy and decayed tree

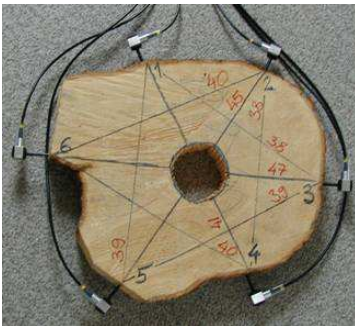


Figure 2 Holes can be found with time measured along several lines

2. Hardware overview

Fakopp 3D consists of the following hardware parts:

- Piezo transducers
- Amplifier boxes
- Battery box
- Cables to connect amplifier boxes and battery box
- Caliper for measuring sensor positions
- Sensor remover tool
- Tape measure
- Steel hammer for tapping transducers
- Rubber hammer for fixing transducers
- Case



Figure 3 Contents of the Fakopp 3D case

2.1 Guarantee

The FAKOPP instrument, including the sensors, is guaranteed for one year. The guarantee starts on the date displayed on the bill and is valid for the following one year. Any repair should be sought from the manufacturer. The guarantee does not cover any breakage caused by misuse or deliberate damage to the instrument.

2.2 Technical data

Total weight incl. case without PC	8 kg
Battery supply:	9V rechargeable battery
Power consumption per amp. box	60 mW
Instrument case:	Peli Case
Low battery indicator:	led
Standard deviation of time:	$\pm 2 \mu\text{s}$
Sensor (start and stop):	high sensitivity accelerometer
RS232 baud rate is fixed:	9600 bps
Databit	8
Parity	none
Stopbit	1
Connection to PC	Bluetooth
Permissible temperature range for use and storage:	0-40°C

2.3 Piezo transducers

One of the most important part of the Fakopp 3D system are the special piezo transducers. These transducers can be fixed by the integrated nail on the trunk and can stand hammer taps so they are very robust. On the other hand the noise-level is very low allowing for precise measurements.



Figure 4 Piezo transducer with integrated nail

2.4 Amplifier boxes

The sensors are connected to the amplifier boxes with BNC connectors. The sensors and the connectors on the amplifier boxes are numbered as well, however because the sensors are identical, you can use any sensor with any amplifier box. The only thing that matters is the numbering of the connectors, because the system identifies the measured traveltimes based on this numbering.

There are cables to connect the amplifier boxes. Make sure to apply correct connector position when connecting as shown on figure. Connect neighbouring amplifier boxes with the bottom connector of the one box and the side connector of the other box. Every amplifier box has to be connected to another one.



Figure 5 Apply correct connector positioning



Figure 6 Connect bottom to side

2.5 Battery box

The battery box contains the battery for the system. It has to be connected with the amplifier boxes, can be connected to any amplifier box, but it is advised to connect it to the first or last box. There is an ON-OFF switch on the battery box. Keep it turned off while connecting each component and turn it only on when you start the measurement. When turned on, you can use the yellow battery checker button which lights the green led when the battery is OK. Otherwise please change the battery. We recommend to use a 9V rechargeable battery. Please make sure to apply correct polarity as shown in the battery container when replacing battery, otherwise the amplifiers may be damaged. Always keep the unit turned off while changing battery. The battery box also contains the Bluetooth converter for PC connectivity.



Figure 7 Battery box with ON-OFF switch and battery checker button



**Figure 8 Bottom side of battery box for battery replacement.
Always apply correct polarity when changing battery.**

2.6 Sensor remover

There is a special tool for removing sensors from the tree. Just attach it to the sensor and use the weight a couple of times to pull the sensor out. Don't use this tool to drive the sensor in.

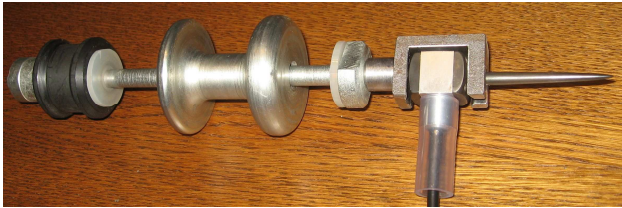


Figure 9 Sensor remover

3. Fakopp 3D Software

The traveltimes measured by Fakopp 3D are transmitted to the software on the PC. This software calculates the resulting 2-dimensional velocity map of the internal state of the tree.

3.1 Requirements


- Windows Vista, XP or 2000 system
- 10MB free space on your hard disk
- CD drive
- RS232 port or properly installed USB-RS232 converter cable or Bluetooth

3.2 Installation

To install the software, just run the installer from the CD provided. The installer will ask for the destination directory and copy the program files. When finished, you can start the program from the Start Menu.

3.3 Introduction

This program collects and evaluates data from the Fakopp 3D to PC. It operates for sensor numbers between 6 and 64. The time data is collected on the RS232 port, distance data manually through the keyboard. The result is a 2 dimensional velocity map representing the internal state of the tree. The measurement can be saved to a file to re-open and re-evaluate later.

The program can be started with the Fakopp3D.exe, or simply by clicking the “FAKOPP 3D” icon  on your desktop or in the Start Menu. The program window consists of 3 parts: On the top the menu line and 4 icons below it. The main area of the window consist of 7 tabs, these are responsible for the data inputs and evaluation. On the bottom there is a status bar.

The menu system is the following:


- File
 - o New
 - o Open
 - o Save
 - o Save as
 - o Exit
- Export
 - o Measurement as HTML
 - o Map as image
 - o Map as data file
 - o Intersection as data file
- Help
 - o Help
 - o About

The 7 tabs are:

- Notes
- Time data
- Time matrix
- Position data
- Distance matrix
- Velocity matrix
- Velocity map


3.4 Menu system

File/New


Prepares the program for a new measurement, all previous unsaved data will be deleted. Before it happens, the program asks for confirmation. It is the same as if you click the  icon.

File/Open

Opens a previously saved measurement. The default extension for Fakopp3D measurement files is *.f2d. The program asks for confirmation before the current

unsaved data gets overwritten on the data fields. It is the same as if you click the  icon.

File/Save

Saves the measurement to a file. It is the same as if you click the  icon.

File/Save as

Same as File/Save except that you can save the file with a different filename.

File/Exit



Exits the program. If there are unsaved data, asks for confirmation.

Export

You can export the test results in 3 different forms:

- Measurement as HTML file: export, where the notes, measured time, geometry information, time, distance and velocity matrices are available including the image result.
- Map as Image: generates a JPG file of the velocity map.
- Map as data file: the velocity map can be exported as a matrix to an ASCII file for further processing.
- Intersection as data file: a line intersection can be selected on the velocity map. This function saves the velocity values versus the distance on the line to an ASCII file for further processing.



The  and  icons start and stop the serial communication. They are useful for example if you use a Bluetooth RS232 adapter and it was turned off when the program started, so the program could not build up the connection at the beginning. Clicking the disconnect and connect icon in this case can build up the connection. You can always see the list of opened COM ports in the status bar.

3.5 Tabs

The main screen of the program is divided into 7 tabs. To complete a measurement, go through each of these tabs and provide the necessary information.

3.5.1 Notes

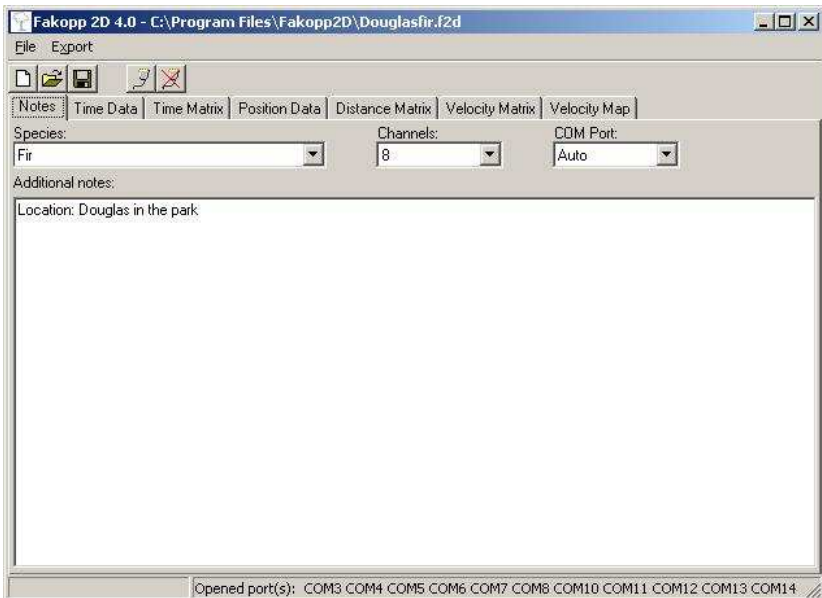


Figure 10 The notes tab

Channels: number of sensors your Fakopp3D actually has.

Com port: number of RS232 port your Fakopp3D uses to connect to PC. You can set a specific port number between COM1 and COM99. You can also set the port selection to AUTO. In this case the program tries to open all the ports from COM1 to COM99. The advantage of AUTO is, that you don't have to know the exact port number, you only have to connect the unit. The disadvantage is, that the program opens and therefore allocates all other ports also, but we recommend to use this setting. On the status bar if Time data tab is active you can see which ports could be opened. Please note, that serial communication is only active if Time data or Time matrix tab is selected. You can read more about serial communication

Species: Choose the species of the tree in the Species field. The tree species database is stored in the species.dat and speciesname.dat. The results depend on the chosen species. The measured velocity has to be corrected because of the deviation between the radial and tangential velocity. Software calculates the radial velocity – even if the velocity measurement has been done in tangential orientation.

Additional notes: you can enter here any kind of comment about the measurement

3.5.2 Time Data

You can see the data coming in from the serial port on this tab. After you hit a sensor, Fakopp3D measures the wave propagation time to all the other sensors and sends the measured data to the PC. The table in the middle of this tab stores these data. The column number in the table matches the sensor number. The leftmost column of the table doesn't contain time data, but it refers to the quality of each row, it can have one of the following values: OK, Invalid or Filtered.

A row is indicated as OK, if it contains exactly one piece of 0 time. Otherwise it is indicated as Invalid and will not be used during the evaluation process. All the time data lower than 10 microsec (this value can be changed in fakopp2d.ini, zerolimit) is stored as 0. Also from the disconnected sensors the program reads 0.

During the data reading there is a filtering algorithm (can be turned off by the checkbox) that tries to filter the data rows with high standard deviation. It starts filtering if there are at least 3 OK data rows from a specific sensor. If there is a difference more than 80 microsecond between any data from the same sensor, the algorithm selects the most deviating row as Filtered. Filtered rows will not be used during the evaluation process.

The list on the left of this table shows the number of OK hits to every sensor. At least 3 OK rows are needed from every sensor (this value can be changed in fakopp2d.ini, minhit). The cell of a row is red if there is not yet enough data. You can delete the selected data row with the Delete selected button. The last measured line can be

deleted with the Delete last button. The Delete invalid button deletes all the Invalid rows.

The Clear button deletes all the data at once. During the data collection phase it is highly recommended to observe the collected data and delete the ones with high deviation if they are not filtered out automatically. 1-2% deviation between the data rows can be accepted.

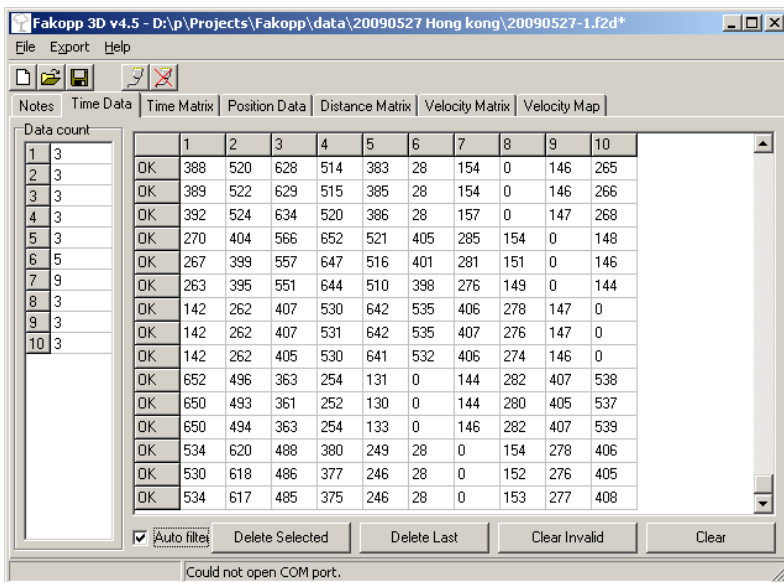


Figure 11 The time data tab after collecting the time data

3.5.3 Time matrix

If there are enough data rows from each sensor, then in this table you can see the average propagation times between each sensor pair and the standard deviation between the [] signs. It is highly recommended to check these standard deviation values at each measurement and if you experience high values (above 3%), then go back to time collection and remove or re-measure some lines.

The standard deviation between the [] signs can be absolute, I this the unit is microseconds, or it can be relative to the measured average, in this case the unit is percent. You can switch between these two formats by clicking on the “Standard deviation in %”.

The time matrix contains the average measured time and the standard deviation.

You can also check here the time difference between the travel time measured in the 2 different directions. The row number of a given cell is the number of sensor hit (start sensor), the column number is the number of stop sensor. So normally you should get approximately the same average in the *i*.th row and *j*.th column as in the *j*.th row and *i*.th column. If the difference is too high, it can mean that the sensor with higher average times is not correctly fastened into the tree or it is out of order. If the difference is greater than 80 microsec (this value can be changed in fakopp2d.ini, devlimit2), then the program shows a notification.

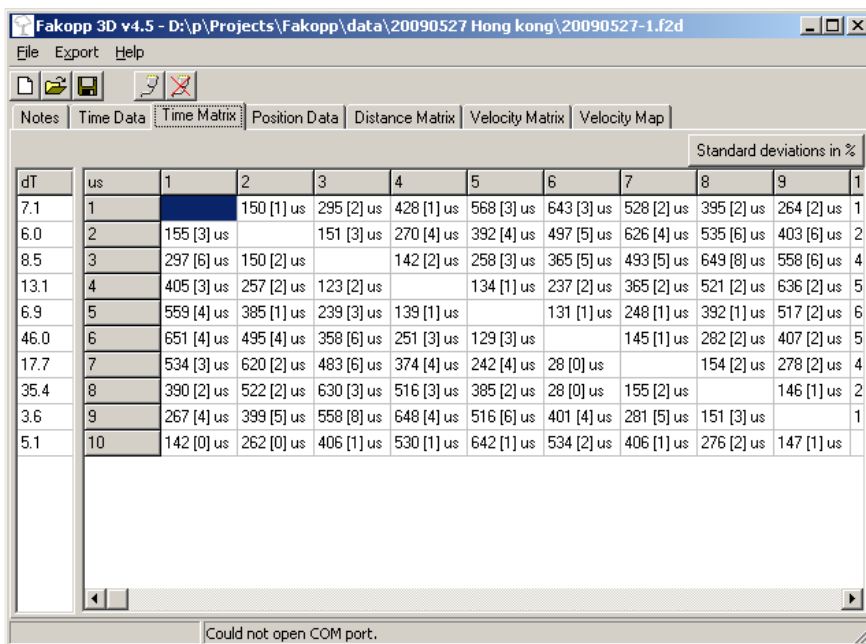


Figure 12 The time matrix tab during the evaluation.

3.5.4 Position data

You can set the position of the sensors on this tab. You can choose between three distance templates: Ellipse, Irregular and Longitudinal. In case of Ellipse and Irregular the transducers are arranged in a single plane on the tree, in Longitudinal case the transducers are in two planes, see more about this below.

In any case if you are typing the desired distance data, you can move between the input cells with up/down arrow or the Enter button.

All the distances are in cm.

Ellipse is recommended if the shape of tree is approximately circular or elliptical. In this case you only have to measure 3 distances: D1 and D2 are the small and large diameters (perpendicular) of the tree, C is its circumference. After you enter every data a message appears that contains the distance from the 1st sensor along the circumference. Place the 1st sensor to one end of the greater diameter, this is the 0 distance. Place all the other sensors to the distances calculated by the program in clockwise order.

If the shape of the tree trunk is too far from ellipse ($D2 > 2 * D1$ or C is not the same as the circumference of an ellipse with D1 and D2 diameters within 15%), you get an error message.

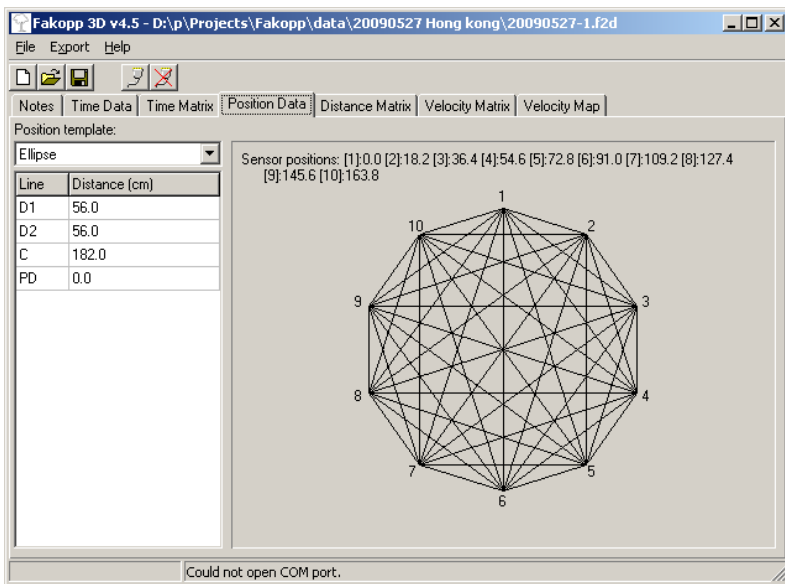


Figure 13 The ellipse geometry model

Choose **Irregular** if the shape of tree is not elliptical. In this case you have to measure $(2n-3)$ distance data, where n is the number of sensors. First place the sensors on the tree in a plane in clockwise order as you like, but try to keep roughly equal distances between the sensors. After this you have to measure the distance between the given sensor pairs. Make sure to type the distance to the correct input field, otherwise the program will go wrong. The program calculates the coordinates of the sensors from

Fakopp 3D Acoustic Tomograph - User's Manual -

these data and the image appears, you can use this image to check if the data you entered was correct.

There is one additional input parameter for both position schemes at the bottom of the list, this is the Penetration Depth or PD parameter. This is the depth at which the sensor needles are driven inside the tree from the bark surface. It is necessary, because when you register the geometry, you measure positions at the bark surface, however the real propagation of sound starts from the end of the needles. The normal value for this parameter is 3 cm, but for normal size trees (above 50 cm diameter) this value is not critical. However, in case of small trees, it is important to enter this parameter correctly.

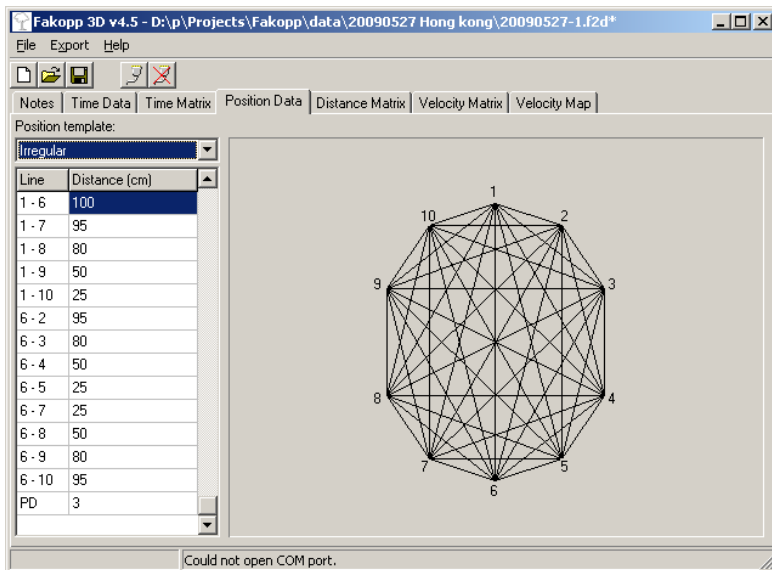


Figure 14 The irregular geometry model.

3.5.5 Distance matrix

After every distance data is entered on the position tab, you can check all the distances in the Distance Matrix. The applied unit is cm.

cm	1	2	3	4	5	6	7	8
1		16.0	31.0	43.0	48.0	44.0	34.0	22.0
2			17.1	31.7	42.0	44.4	40.9	33.0
3				15.5	30.0	38.8	42.9	40.5
4					18.0	32.6	43.2	45.8
5						18.0	34.0	42.0
6							18.4	30.3
7								14.2
8								

Figure 15 The Distance Matrix.

3.5.6 Velocity matrix

There is a table on this tab containing the calculated velocities between each sensor. Because of the time correction (M in the Position Tab, and the Species settings on the Notes tab) the velocities in the table are not exactly the ratio of distance and measured time. 90% of the average of of the selected (green background) velocities is used to calculate the Reference Velocity. The Reference Velocity will be the Vmax value on the Velocity Map. You can change the format of the shown velocities to percentage by clicking on the “Show Relative Velocity” button. Clicking it again will change it back to m/s.

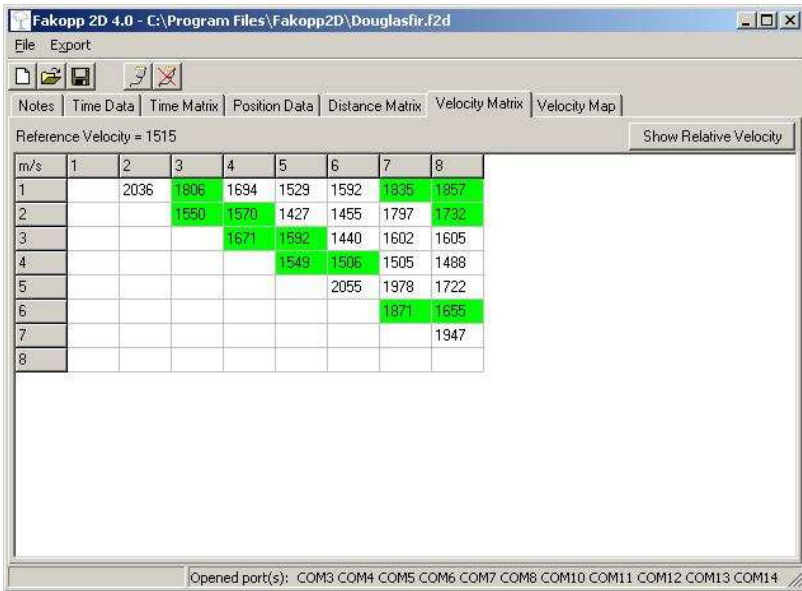


Figure 16 Velocity Matrix and the values selected to determine Reference Velocity

3.5.7 Velocity map

The result is a 2-dimensional velocity map of the tree.

If there are enough time and distance data, the program calculates the velocity map in 1 or 2 seconds. On the left you can see the color scale. You can choose between several color scales from Color template field. Vmin and Vmax mean the minimal and maximal velocities regarding to the colors. You can change them with the + and - buttons by 50 m/s steps or type another value into the edit box. The default value of Vmax comes from the reference velocity. If you move the cursor over the map, the velocity of the pixel under the cursor appears. The velocity map contains radial velocities.

There are 3 visualization modes.

3D map shows the velocity map as a 3D surface. With the left mouse button clicked you can rotate the surface. The coordinates and velocity at the mouse cursor is displayed in a box. With the right mouse button clicked you can select a line intersection of the map. This intersection can be exported to file in the Export menu.

2D map shows the same map, the only difference is that it is shown in 2D and only colors represent the velocity differences. A line intersection can also be selected with the right mouse button.

Graph mode displays not the reconstructed interval velocity distribution, but the measured velocity values between the sensors. The color of the lines corresponds for the velocity values. Moving the mouse over the lines display the line velocity.

The velocity map has two imperfections.

The sound velocity in a hole inside the tree is same as in the air, 340 m/s but the measured velocity will be remarkably higher. This is because the waves by-pass the hole and therefore there is no method to measure the exact velocity inside a hole. Generally, if the velocity decreases somewhere under 90-85% of the average velocity, then there can be a hole or decay.

The other problem is that if there is a long narrow crack in the tree then it shadows the nearby area and the result will not show a narrow crack but a much smaller and wider area at the boundary.

The real resolution of the image depends of the number of sensors used. With 8 sensors you can detect any decay greater than 5% of the whole cross-sectional area. With 32 transducers this ratio is 2%.

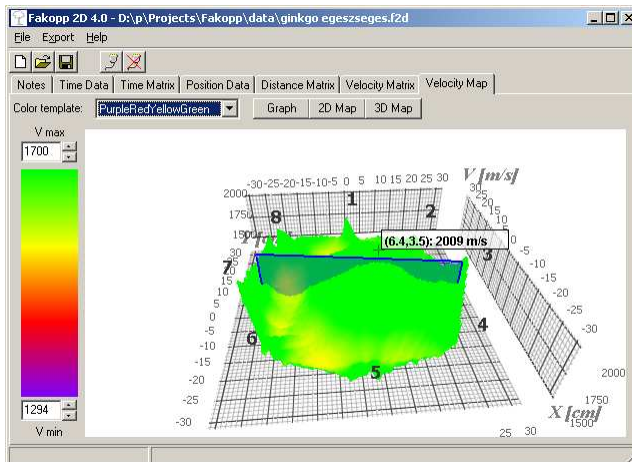


Figure 17 Velocity map visualization in 3D mode

Fakopp 3D Acoustic Tomograph - User's Manual -

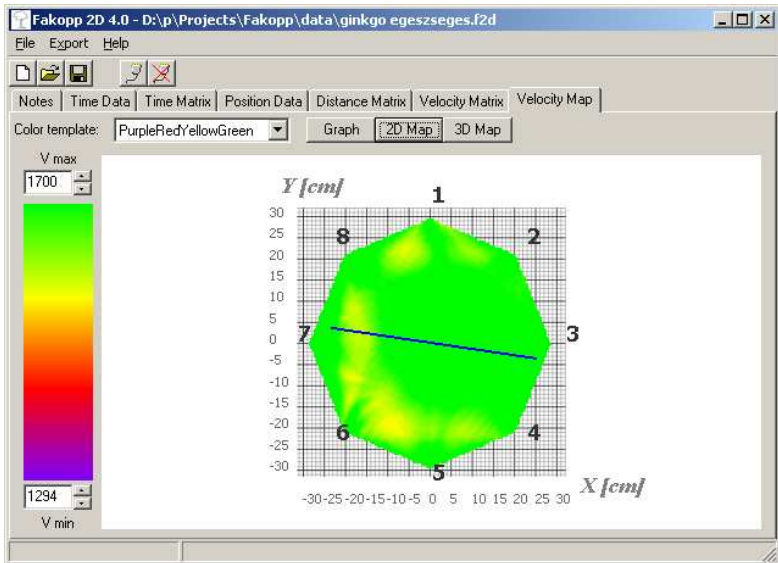


Figure 18 Velocity map visualization in 2D mode

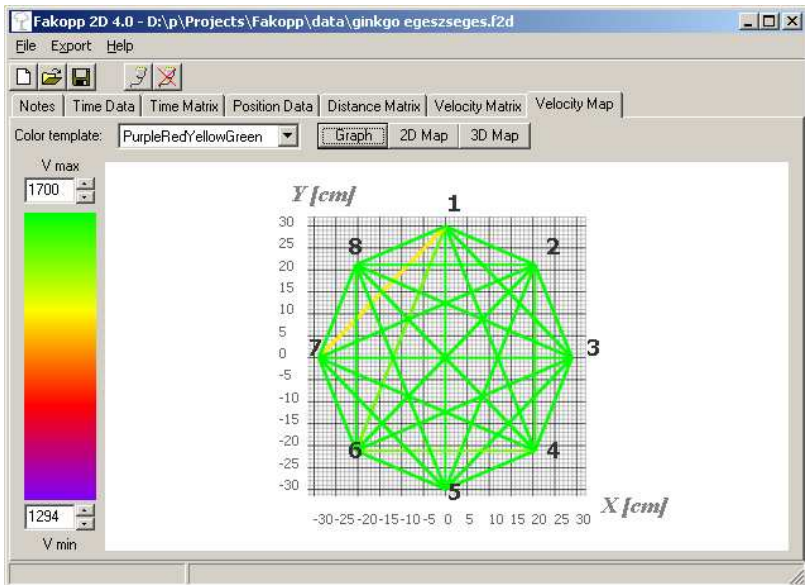


Figure 19 The velocity lines

4. Fakopp Multilayer Viewer

If you create measurements of a single tree at several heights, it can be useful to show the results on a single image in three dimensions. The Fakopp Multilayer Viewer solves this problem and assembles 2D images into a 3D reconstruction of the tree.

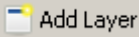
4.1 Requirements



- Windows 2000 or higher
- 2MB free space on your hard disk
- .NET Framework v2.0 or later

4.2 Installation

This software is installed along with the Fakopp 3D software.

4.3 Usage

Fakopp Multilayer Viewer assembles ready measurements in .f2d files together. All measurements have to be with same sensor number and tree species. To add a new layer, click the  button in the toolbar. You can change the display name of the layer and most importantly set the layer height from the ground in centimeters.

You can later modify the layer options with the  icon. Any layer can be deleted with the  icon.

Fakopp 3D Acoustic Tomograph - User's Manual -

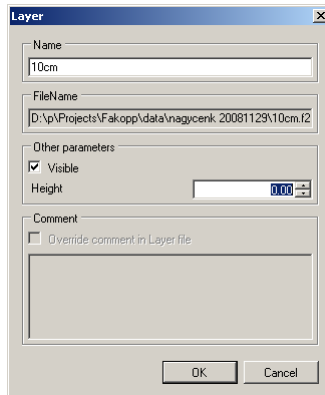



Figure 20 Enter layer height when adding new layer

After adding several layers at several heights, you can choose between two view modes.

You can view each single layer, just like in the Fakopp 3D software by selecting the layer itself from the layer list. You can switch between 2D and 3D view mode with the  icon.

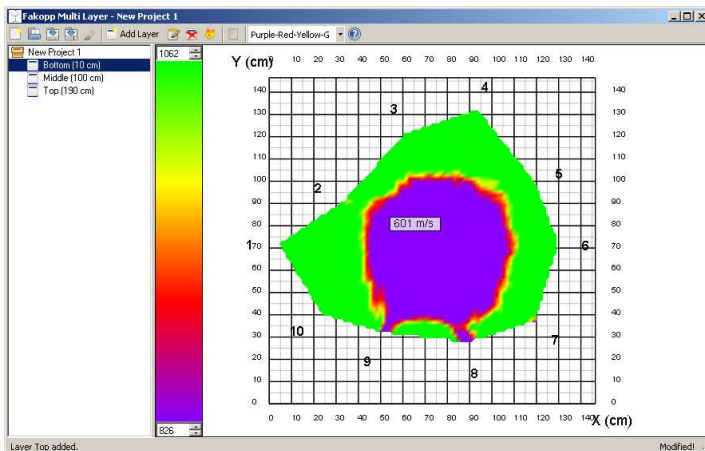


Figure 21 Single layer view mode in 2D

To view the assembled 3D structure, select the project name (topmost element) from the layer list. You need to have at least 2 layers added for this mode to work.

Fakopp 3D Acoustic Tomograph - User's Manual -

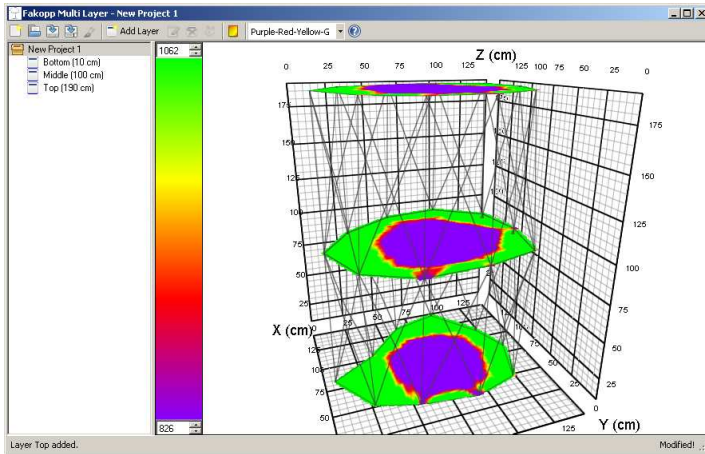



Figure 22 Multilayer view mode without cutting plane

In multilayer view mode a vertical cutting plane can be inserted between the layers. This plane shows interpolated values of the two layers. The plane is always in the middle of the layers and faces the viewer. You can turn on the cutting plane with the  icon.

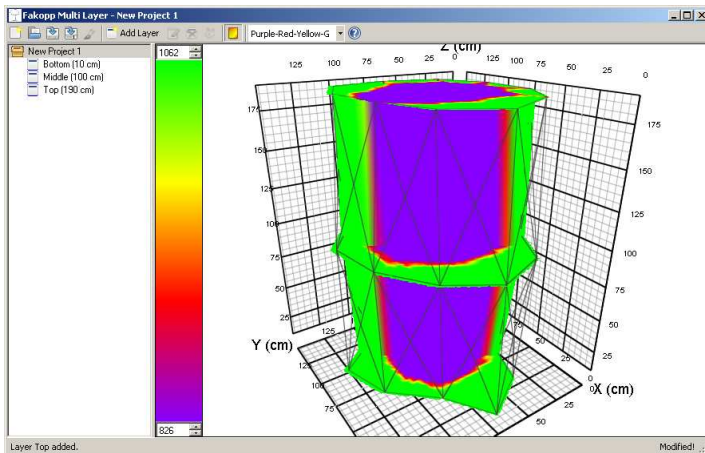







Figure 23 Multilayer view mode with cutting plane

Fakopp 3D Acoustic Tomograph - User's Manual -

Each view can be rotated with the mouse. The color template and velocity limits can be changed the same way as in the Fakopp 3D software.

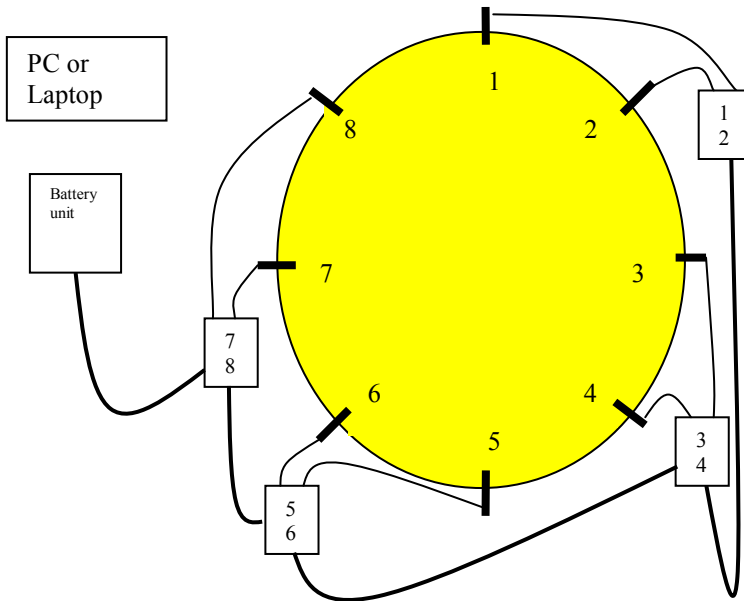
A project can be saved with the  icon or saved with a new name with the  icon. An existing project can be loaded with the  icon or a totally new project can be started with the  icon. Use the  icon to get some help.

5. Using Fakopp 3D

This section describes practical knowledge, tips and tricks for using the Fakopp 3D system.

5.1 Setting up the hardware

When going to a new tree, find a relatively clear spot for the case. Examine the tree and select the height where you would like to do the measurement and decide if the tree looks elliptical or irregular.



The first step is to attach the sensors. Use the rubber hammer for this purpose. The nail has to penetrate the bark and a good coupling is very important between the nail and the wood material, so the sensors have to be so tight that you can not rotate them with

3 outstretched fingers. Coupling is so important, that if you notice later, when tapping the sensors with the steel hammer that a sensor moved more inside the tree and was not coupled good enough, you have to fix it with the rubber hammer and start with tapping all the sensors from the beginning again.

If you choose irregular position mode, you can place the sensors as you like, roughly the same distance is advised between the sensors, but it is not a requirement. When you are ready, you have to measure the distances with the caliper between those sensor pairs which the software asks for.

If you choose ellipse position mode, you need to fix the first transducer at one end of the large diameter of the tree. Fix the tape around the tree with this only sensor as shown on the image below. Measure the large and small diameters of the tree with the caliper and enter these data along with the circumference to the software. The software will calculate the position of each sensor along the tape on the trunk. Make sure to remove the line after placing the sensors because steel can act as an acoustic conductor.



Figure 24 The way to fix the tape with the first transducer



Figure 25 Sensors with tape around the trunk

The sensors need to be placed on a plane perpendicular to the grains. So if the tree is bent, this plane will not be parallel to the ground, but tilted to the same angle as the tree is bent.

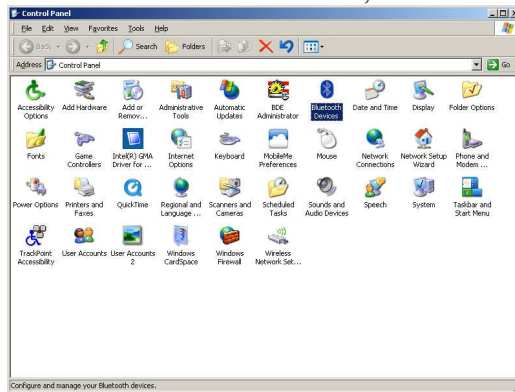
The next step is to connect the amplifier boxes to the sensors with the BNC connectors. Make sure not to cross a cable and connect the correct amplifier channels to the correct sensors because it can mess up your whole measurement. The sensors are numbered as well, but they are identical so they can be interchanged.

After the amplifier boxes are connected to the sensors you need to connect the amplifier boxes with each other with the cables provided. Connect neighbouring boxes with the bottom connector of one box and the side connector of the other and make sure to apply correct connector positioning as explained in section 2.2. When you are ready connecting the amplifier boxes, you can connect the battery box, but keep it turned off while connecting. You can connect it to the first or the last amplifier box as well.

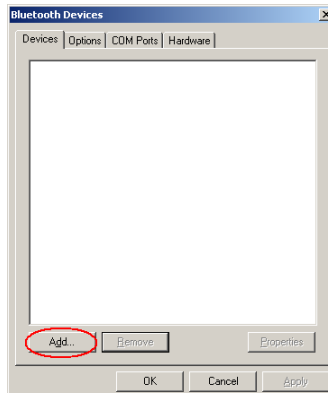
5.2 Setting up the Bluetooth connection

To connect your PC to Fakopp 3D, you need to set up the Bluetooth connection in Windows. This process is explained here step by step for Windows XP, but it is almost the same for other Windows versions.

Step 1: Go to the Control Panel and select Bluetooth, double-click it.



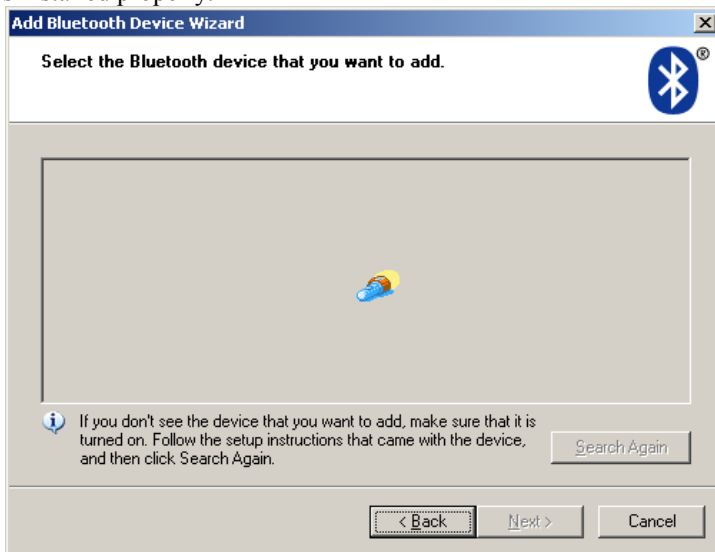
Step 2: Click add.



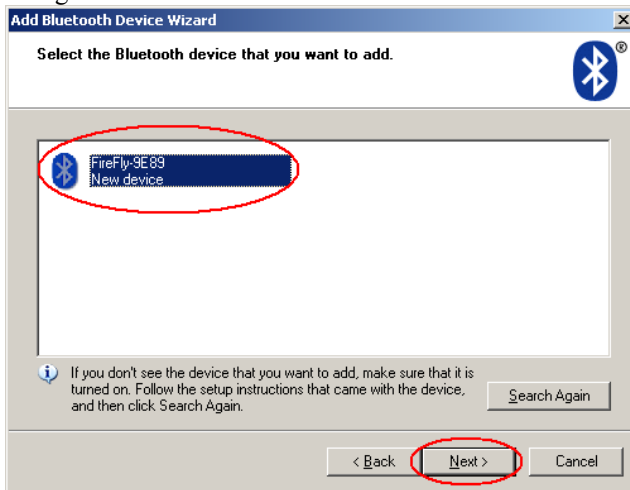
Step 3: Select My device is set up and ready to be found and click Next. Make sure to turn the battery box on before clicking next. The green led should light if you press the yellow button on the battery box. Otherwise the battery should be recharged.



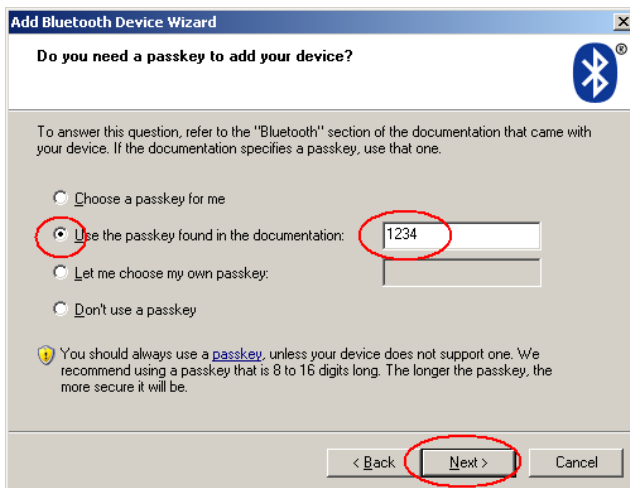
Step 4: Wait until the system finds the converter. If the converter can not be found make sure again that the battery box is turned on and that your Bluetooth receiver in your PC is installed properly.



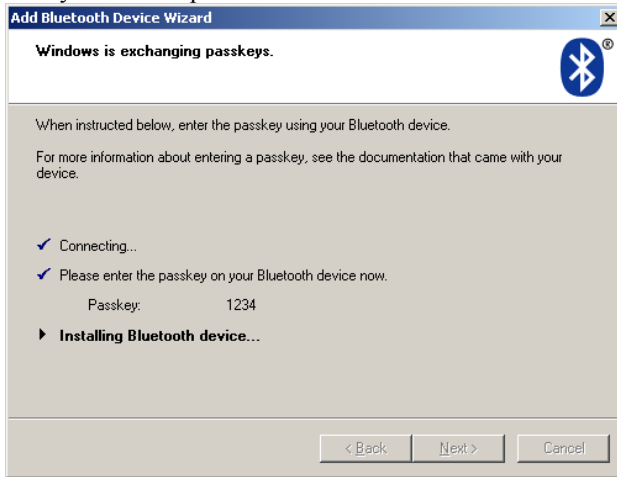
Step 5: If everything works fine, you should see the converter in the list. Select it and click Next. If Windows can not find your device, try turning Fakopp 3D off and on again and search again.



Step 6: Select the Use the passkey found in the documentation and type 1234. Click Next.



Step 7: See as the system sets up the converter.



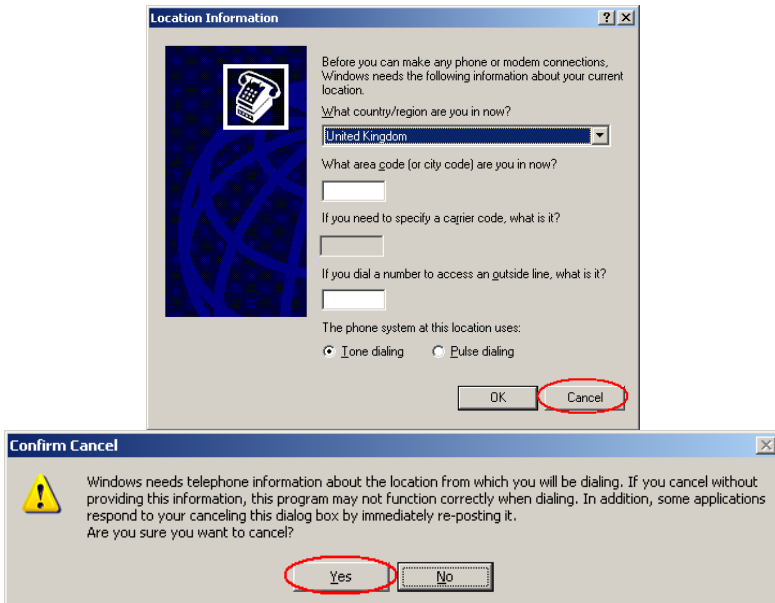
Step 8: On the final page you can find the COM port numbers. The Fakopp software can find these numbers automatically for you, so you don't need them, unless you want to test the communication with the HyperTerminal program for Windows. Click Finish.



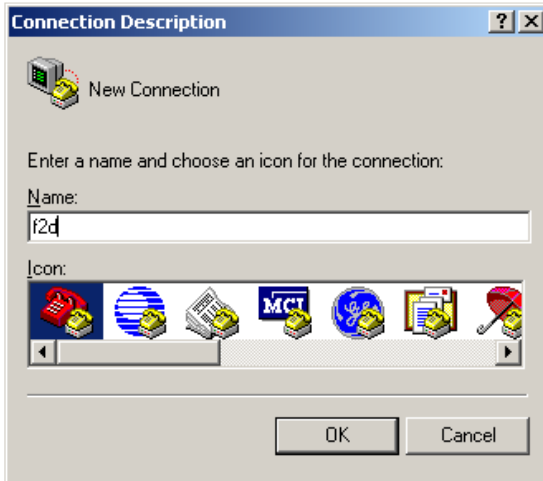
Step 9: This is the screen you should see after the successful setup.



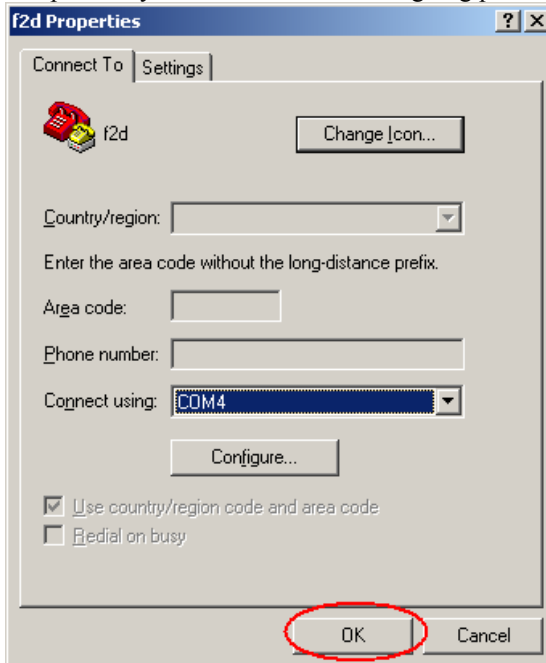
Step 10: To test the connection, start the HyperTerminal in Star / Programs / Accessories / Communication / HyperTerminal. At the start it asks for some telephone numbers because this program was also used for modem connections; just press cancel and yes on the first two screens.



Step 11: Give a name to the connection, just any name, it does not matter. Let's say f2d.

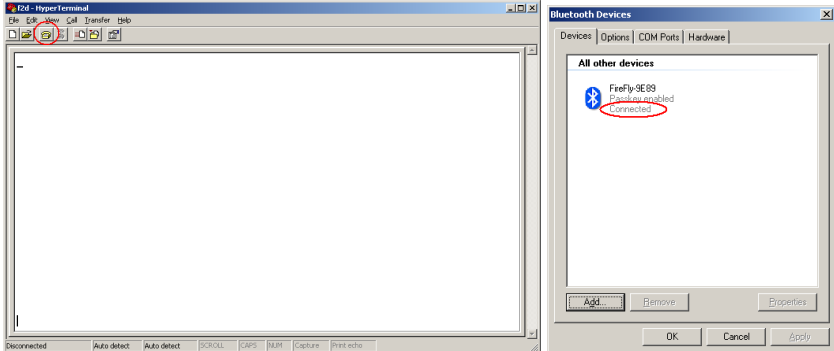


Step 12: In the COM port list you have to select the outgoing port and click OK.

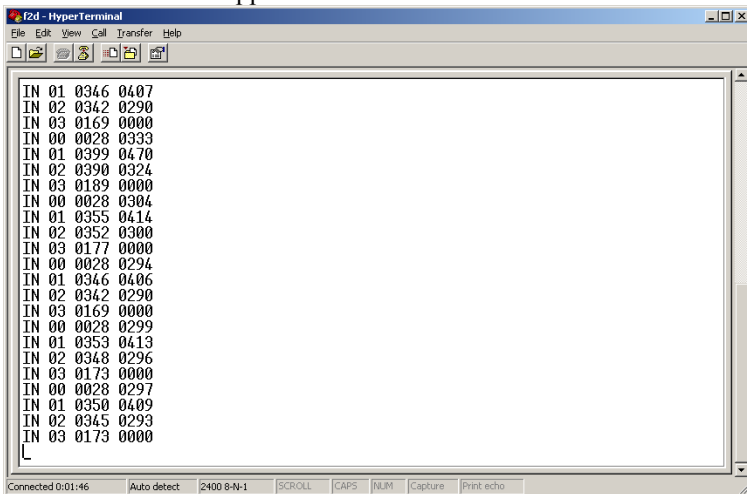


Fakopp 3D Acoustic Tomograph - User's Manual -

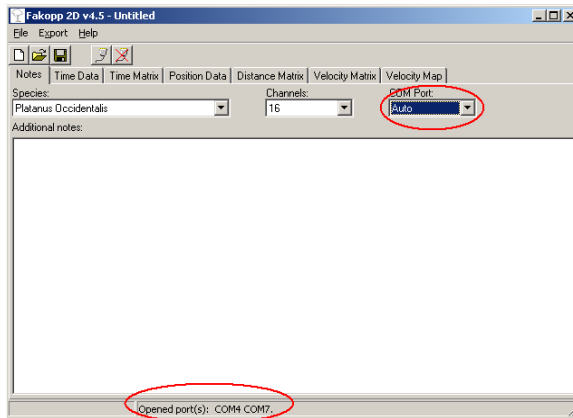
Step 13: Click the Call icon to start the connection. If it is possible to connect to the selected COM port, the Bluetooth window should also signalize the connection. Otherwise try to select a different COM port.



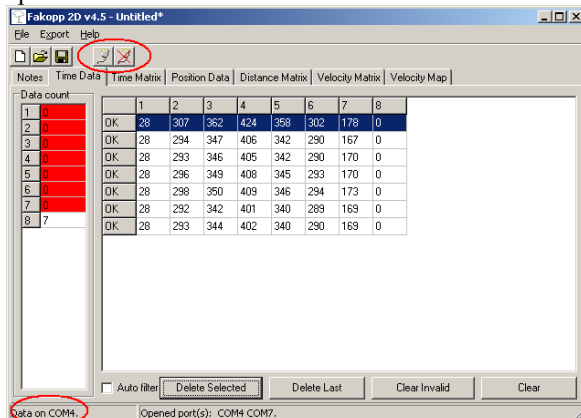
Step 14: Tap a couple of times at any of the sensors to generate some data traffic. You should have the raw transmitted data on your screen. Now you can be sure that the communication between Fakopp 3D and the PC works fine.



Step 15: Start the Fakopp 3D software, but don't forget to close HyperTerminal, otherwise the com port will be blocked and you can not get anything in the Fakopp 3D software. Set the number of sensors (channels) you have and select Auto in the COM port list. You can also select the same COM port which worked in HyperTerminal, however the Auto mode is recommended because it opens every COM port in the same time and you don't have to know the exact port number. The list of opened COM ports is in the status bar at the bottom. You always have to make sure that no other program (HyperTerminal, another running Fakopp 3D software or anything) uses the COM port.







Step 16: Go to the Time Data tab and tap a couple of times at the sensors. You should see your data arriving. You can always break and rebuild the connection with the connect/disconnect icons at the top, so you don't need to restart the program. The number of COM port where the last data arrived from is in the status bar at the bottom.



Step 17: Finally, if the communication does not work at any stage, use the standard method for solving IT problems: turn off the Fakopp 3D hardware, close every program and remove the converter from the Bluetooth device list, you can even restart your PC. Turn on the Fakopp 3D hardware again, re-install the converter based on this tutorial and try to get the data again.

5.3 Collecting time data

To get the sound wave traveltimes between the sensors, you need to start the Fakopp 3D software after setting up the bluetooth connection. Turn on Fakopp 3D with the switch on the battery box and start the Fakopp 3D software. If you forgot to turn on Fakopp 3D before you started the software, no problem. Just click the  icon in the toolbar to disconnect and click the  icon to connect again. If you still have the Bluetooth Devices window open (see the image of Step 13 of chapter 6.2), you should see the “Connected” status appear there. If you would like to switch off Fakopp 3D while still using the software, you can do it without any problems, but in case you switch it on again, use the  and  icons to rebuild the connection. It is recommended to keep the COM port on AUTO, otherwise you need to know the exact port number.

If everything looks fine, you can switch to Time data tab and start tapping the sensors.

A good tap is:

- in the direction of the sensor needle
- at the center of the sensor
- with uniform power
- hammer speed is relatively high
- hammer springs immediately back from the sensor head
- at least 1 second between two taps

Bad taps are:

- on the side of the sensor
- with very low or non-uniform power
- hammer remains on the sensor head after tapping

If you make a bad tap, delete it immediately from the time data list with the Dele Last button. Be careful not to tap on the cable connecting point or on the cable because it will damage the sensor.

At least 3, but possibly 5 taps are recommended per sensor. When you tapped all the sensors, examine the collected data and compare rows from the same sensors. Up to 3% deviation is acceptable, but if you find a line to be deviated from the others too much, select and remove it with the Delete Selected button. If a sensor is not coupled tight enough to the wood, you may see greater deviations. There is a built-in filtering for this purpose which you can use by ticking the Auto Filter checkbox which labels some lines with 'Filtered' and these lines will be excluded from the evaluation. However, it is recommended to do this check and filtering manually as well.

When your batteries are getting tired, you may start receiving 28 microseconds on any sensor. This is definitely bad data which will damage your whole measurement so delete lines containing 28s.

You can check the average time deviations after the \pm sign in the Time Matrix tab. If you find some values too high (above 3%), go back to the Time Data tab and review the data received from / to those sensors. On the left of the time matrix there is a list labeled with dT. This includes the average deviations of times measured when a sensor was tapped (start) and when it received the sound wave (stop). If this deviation is too high, it can also indicate bad coupling.

5.4 Interpreting the results

When enough time data are collected and the sensor positions are registered correctly, you can move to evaluation on the Velocity Map tab. You are free to choose between 2D and 3D visualization of the interval velocity distribution.

The velocity map has two imperfections.

The sound velocity in a hole inside the tree is same as in the air, 340 m/s but the measured velocity will be remarkably higher. This is because the waves by-passes the hole and therefore there is no method to measure the exact velocity inside a hole. Generally, if the velocity decreases somewhere under 90-85% of the average velocity, then there can be a hole or decay.

The other problem is that if there is a long narrow crack in the tree then it shadows the nearby area and the result will not show a narrow crack but a much smaller and wider area at the boundary.

The real resolution of the image depends of the number of sensors used. With 8 sensors you can detect any decay greater than 5% of the whole cross-sectional area. With 32 transducers this ratio is 2%.

5.5 Taking apart

When you are ready with the measurement, the parts of the system can be removed on a backward way. So first turn off the battery box, remove the cables between the amplifier boxes, remove the sensors from the amplifier boxes and finally remove the sensors. Please note that if you make another measurement nearby and don't would like to take apart all cable connections, you still need to disconnect the sensors from the amplifier boxes before pulling out the sensors from the tree, otherwise the connectors may be damaged.

To deattach the sensors from the tree you have two possibilities. First, you can use the sensor remover which is a very convenient way. Just attach the remover to the sensor, use the weight a couple of times and the sensor is out.

The other method is the manual method. Grab a sensor so that the sensor head is in your palm and hold the cable connecting point (but not the cable!) with your fingers. Start rotating the sensor around the needle there and back and pull it in the same time while rotating. In this way the can be pulled out.

Don't use the hammer handle as a support under the cable connecting point to pull the sensor out, because this applies a sideways force to the needle which can bend or break it on the long run. Be very careful not to damage the cable during the process.

